



# GAT MONTHLY MEMBERSHIP PROGRESS REPORT

Results as of: 4/30/2022

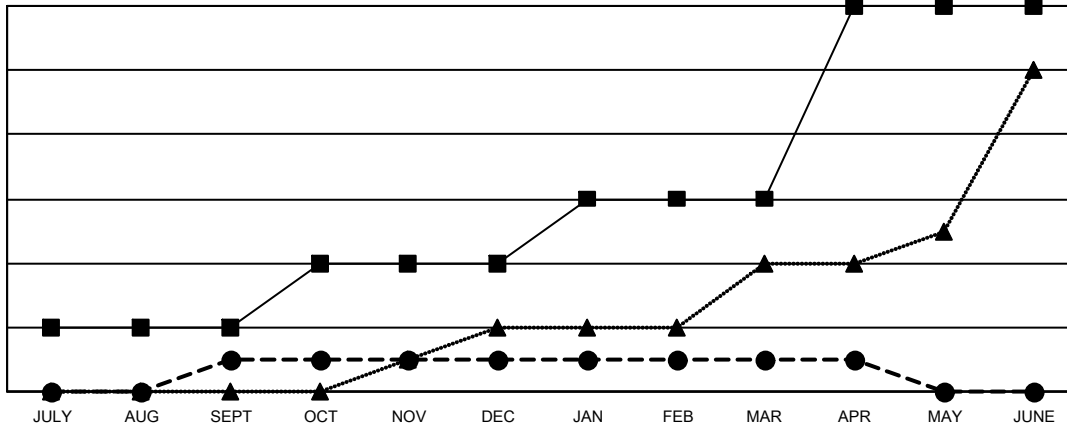
Multiple District 27

LOCATION: WISCONSIN

Clubs			
RESULTS FOR 2021-2022			
QUARTER	NEW CLUB GOAL	NEW CLUBS	DROPPED CLUBS
JULY/AUG/SEPT	2	1	0
OCT/NOV/DEC	2	0	6
JAN/FEB/MAR	2	0	0
APR/MAY/JUNE	6	0	1

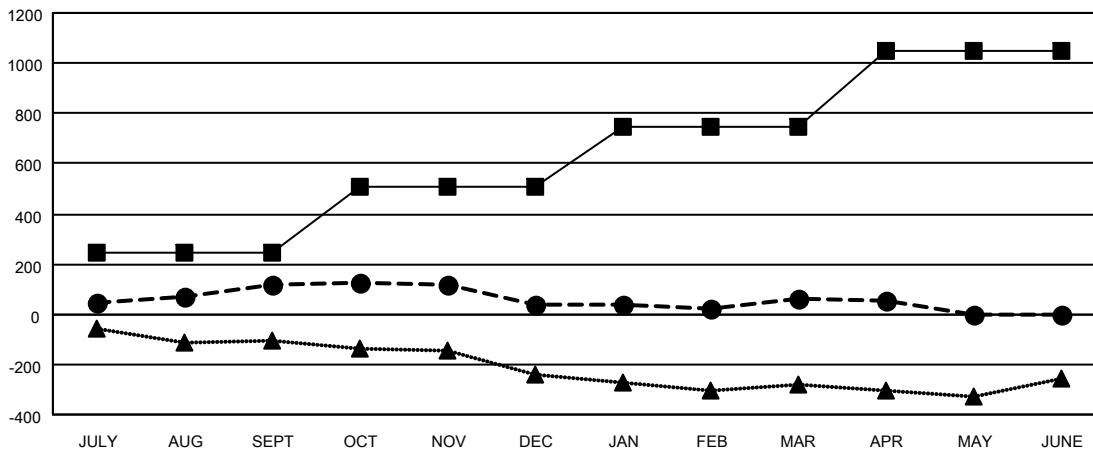
Members			
RESULTS FOR 2021-2022			
QUARTER	MEMBER GROWTH NET GOAL	MEMBER GROWTH ACTUAL	DROPPED MEMBERS ACTUAL (including transfers)
JULY/AUG/SEPT	243	461	312
OCT/NOV/DEC	265	362	395
JAN/FEB/MAR	241	408	354
APR/MAY/JUNE	301	130	109

GOALS AND ACTUAL NEW CLUBS CUMULATIVE



- CURRENT YEAR GOALS FOR NEW CLUBS
- CURRENT YEAR ACTUAL NEW CLUBS
- ▲- LAST YEAR ACTUAL NEW CLUBS

GOALS AND ACTUAL MEMBERS CUMULATIVE



- MEMBER GROWTH NET GOAL
- MEMBER GROWTH ACTUAL
- ▲- LAST YEAR MEMBERSHIP ACTUAL

DROPPED CLUBS: 7	
<b>DROPPED MEMBERS</b>	
DECEASED	193
CLUB CANCELLED	51
OTHER	926
<b>TOTAL</b>	<b>1,170</b>

331 CLUBS OF 515 ADDED 1 OR MORE NEW MEMBERS

[CLICK HERE FOR CUMULATIVE MEMBERSHIP DATA](#)

GENDER DISTRIBUTION	
MALE	12,129 (71.85%)
FEMALE	4,751 (28.15%)
NON BINARY	0 (0.00%)
PREFER NOT TO ANSWER	0 (0.00%)
<b>TOTAL FAMILY UNIT MEMBERS</b>	<b>3,488</b>
<b>FAMILY MEMBERS PAYING HALF DUES</b>	<b>1,772</b>